

The Keadby 3 Low Carbon Gas Power Station Project

Document Ref: 4.14

Planning Inspectorate Ref: EN010114

The Keadby 3 (Carbon Capture Equipped Gas Fired Generating Station) Order

Land at and in the vicinity of the Keadby Power Station site, Trentside, Keadby, North Lincolnshire

Indicative General Arrangement and Elevations A18 Gatehouse

The Planning Act 2008

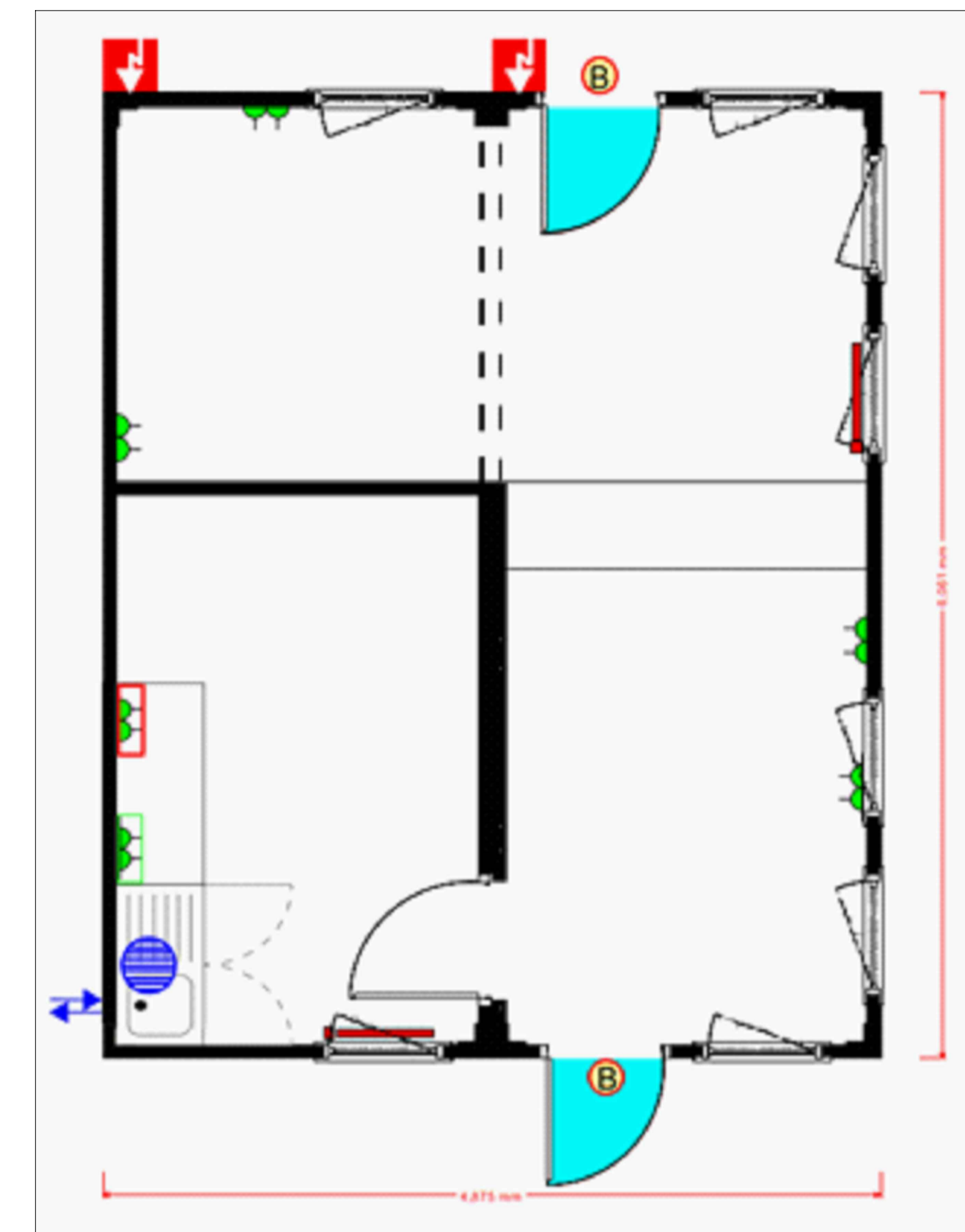
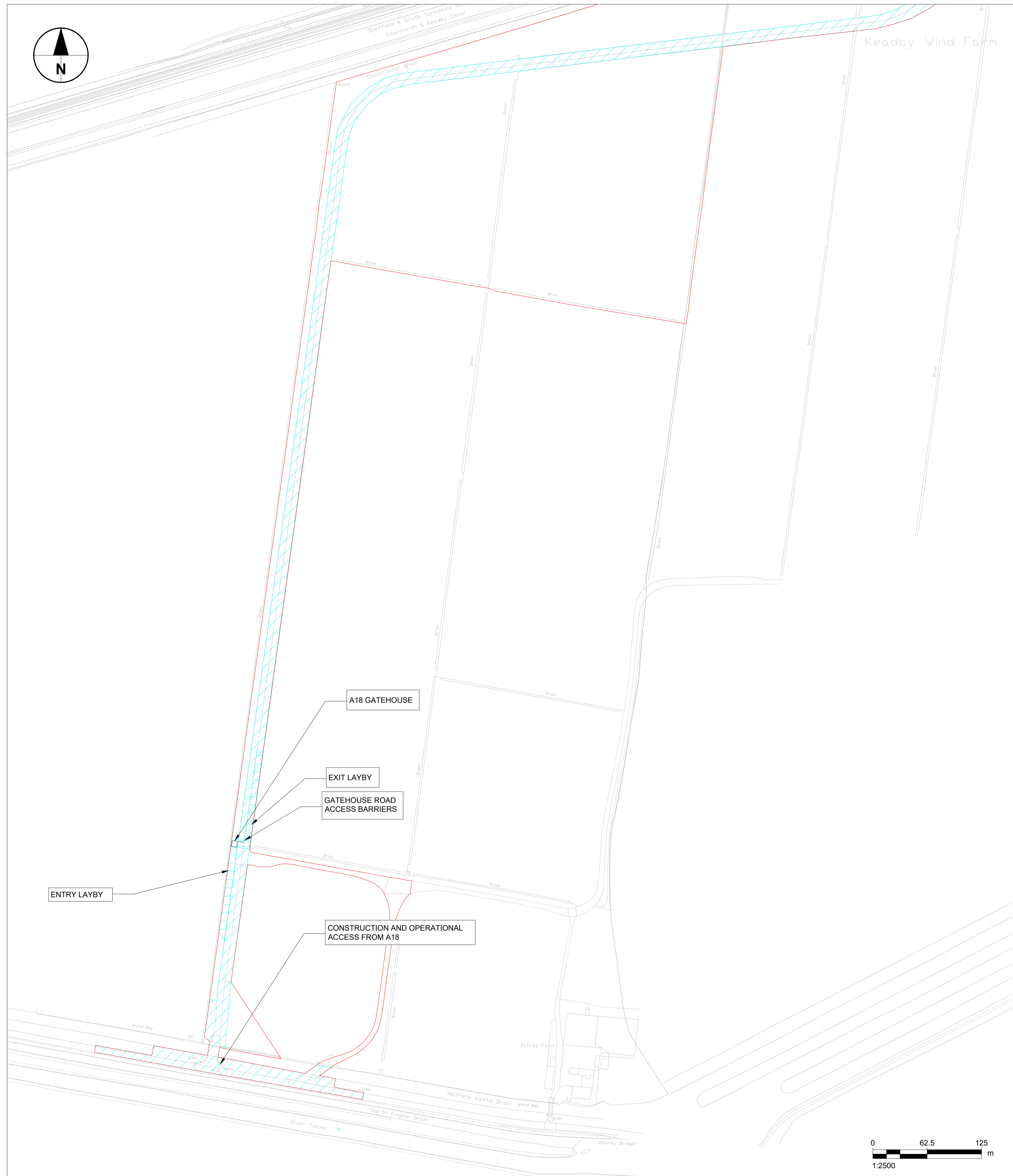
The Infrastructure Planning (Applications: Prescribed Forms and Procedure) Regulations 2009 - Regulation 5(2)(o)

Applicant: Keadby Generation Limited

Date: May 2021

DOCUMENT HISTORY

Document Ref	4.14/Indicative General Arrangement and Elevations A18 Gatehouse
Revision	VP1.0
Document Owner	AECOM

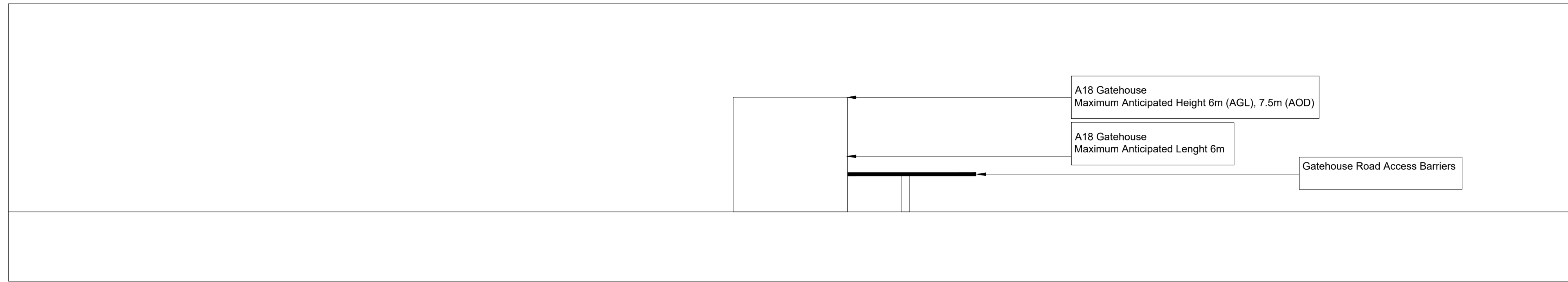


Indicative Gatehouse Layout - Maximum Dimensions: 6m Length, 7m Width, 6m Height

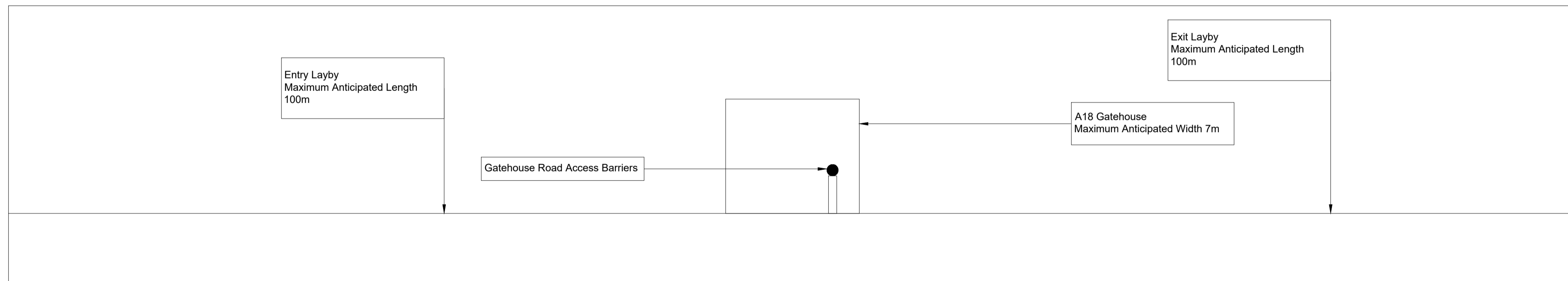


Indicative Gatehouse Visual Appearance - Single Storey Red Brick Built Structure

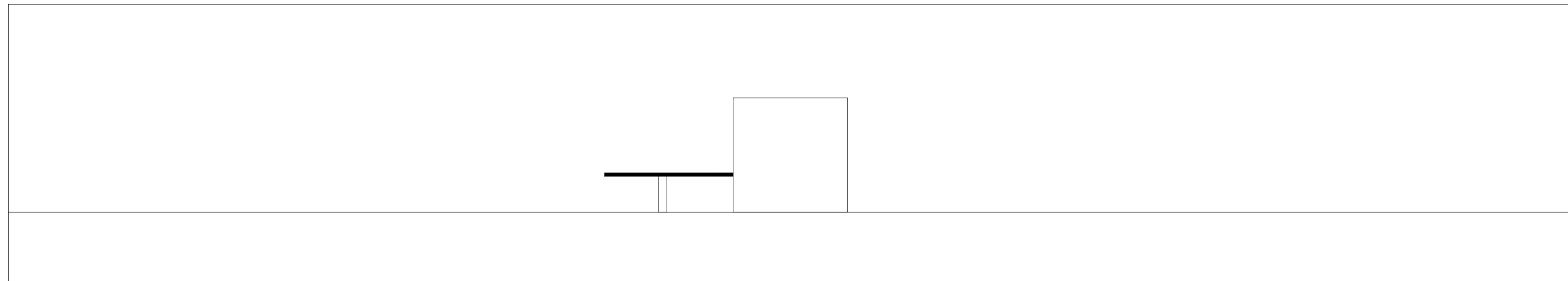
This drawing has been prepared for the use of AECOM's client. It may not be used, modified, reproduced or relied upon by third parties, except as agreed by AECOM or as required by law. AECOM accepts no responsibility, and denies any liability, whatsoever, to any party that uses or relies on this drawing without AECOM's express written consent. Do not scale this document. All measurements must be obtained from the stated dimensions.



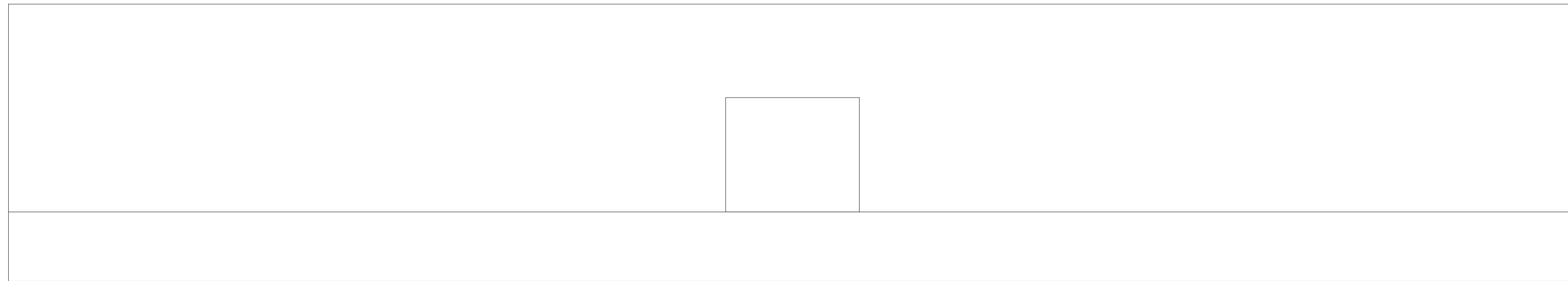
SOUTH ELEVATION



EAST ELEVATION



NORTH ELEVATION



WEST ELEVATION



PROJECT

The Keadby 3 (Carbon Capture Equipped Gas Fired Generating Station) Order

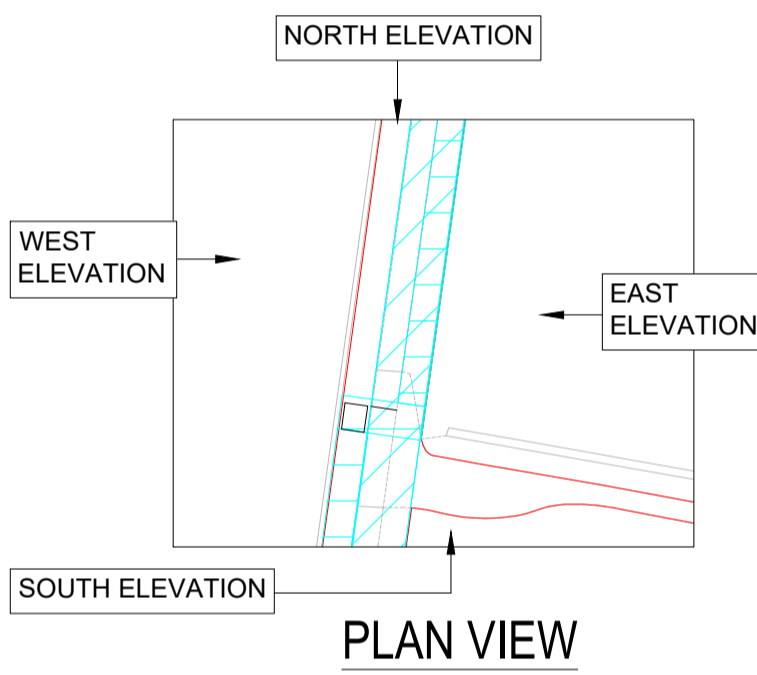
APPLICANT

Keadby Generation Limited

CONSULTANT

AECOM LIMITED
GROUND FLOOR
2 CITY WALK
LEEDS, LS11 9AR
T:+44-(0)113-301-8400
WWW.AECOM.COM

LEGEND



NOTES

Reproduced from Ordnance Survey digital map data © Crown copyright 2021. All rights reserved. Licence number 0100031673.

The Keadby 3 (Carbon Capture Equipped Gas Fired Generating Station) Order
Regulation 5(2)(o) - Infrastructure Planning (Applications: Prescribed Forms and Procedures) Regulations 2009

ISSUE PURPOSE

DCO APPLICATION

PROJECT NUMBER

60625943

SHEET TITLE

General Arrangement and Elevations
A18 Gatehouse
Sheet 2 of 2

SHEET NUMBER

Application Document Ref. 4.14
60625943-PE-DRG-026

Project Management Initials: Designer: _____ Checked: _____ Approved: _____

Last saved by: DAN RAILEANU(2021-05-18) Last Plothead: 2021-05-27
Filename: C:\USERS\DAN RAILEANU\AECOM\DIRECTORY\KEADBY 3 DCO DELIVERABLES - GENERAL\WORKING\60625943-PE-DRG-026.DWG

This drawing has been prepared for the use of AECOM's client. It may not be used, modified, reproduced or relied upon by third parties, except as agreed by AECOM or as required by law. AECOM accepts no responsibility, and denies any liability, whatsoever, to any party that uses or relies on this drawing without AECOM's express written consent. All measurements must be obtained from the stated dimensions.